

LS-2712 Premium Panel

Datasheet DS-00112



High Density Multimode Duplex LC to MPO-12 Fiber Port Aggregation and Breakout

Fiber Mountain's LS-2712 Fiber Port Aggregator (FPA) provides multimode fiber breakout and aggregation with interactive per-port LED control for a wide range of networking devices, simplifying installation and maintenance of increasingly dense fiber networks. It provides LED indicators for each port, which can be controlled remotely via Fiber Mountain's AllPath Director (APD) orchestration software. Occupying only 2 RU, the LS-2712 FPA can break out or aggregate seventy-two (72) Duplex LC interfaces with twelve (12) MPO-12 interfaces, with direct port mapping and per-port LEDs.



LS-2712 Front View



LS-2712 Rear View

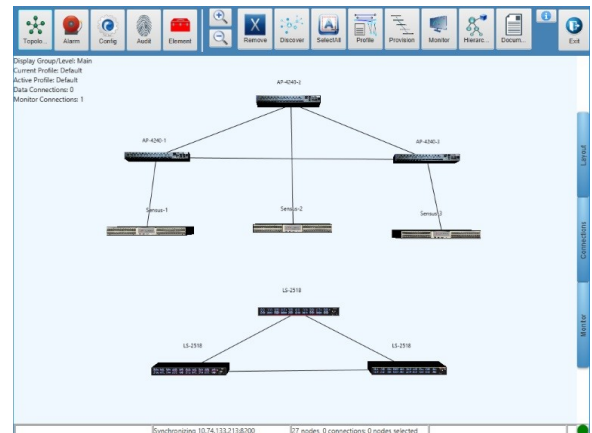
Configurable LEDs

Each port on both the front and rear faceplates has an associated tri-color LED, supporting red, green and amber. Depending on the selected configuration options, each LED's color may be set to replicate the associated network device's port status for port extender functionality, or may be controlled remotely for purposes such as technician guidance or any other defined criteria.

Use Cases:

- Port Replication, extending attached device port to the FPA
- Breakout of high density MPO-12 fiber interfaces to Duplex LC interfaces

AllPath Director (APD) Software provides full control of all L-Series hardware



Fiber Mountain's Glass Core Orchestration—Layer 1 SDN

AllPath Director (APD) orchestration software provides network-wide visibility and discovery of products in the L-Series FPA family, including the LS-2712. Applications are designed to take advantage of the total network view, so tasks such as provisioning end-to-end connectivity are easily performed via point & click workflows. APD also provides documentation management with port labeling, reservation, asset management and more. Security is improved with audit trails providing historical records of provisioning and monitoring changes. A graphical rendering of the layer 1 topology provides a network-wide view of the physical layer, with enhanced features such as Path Finder, which draws out the connection path from a selected port to the destination.

LS-2712 Premium Panel

Datasheet DS-00112



LS-2712 Specifications

Catalog Number	Fiber Type	Port Configuration		Fiber Mapping	Example Use Cases
Multimode		Front Ports	Rear Ports		
LS-2712-001	MM OM4	72xDuplex LC	12xMPO-12	Type A	144xLC fibers to 12xMPO-12 ports
LS-2712-002	MM OM4	72xDuplex LC	12xMPO-12	Type C	144xLC fibers to 12xMPO-12 ports

Other configurations & fiber mapping options are also available. Example Use Cases are not exclusive.

Multimode Fiber Specifications: Internal fiber is multimode OM4. Front and rear MPO connectors are aqua.	Characteristic	Multimode MPO	Multimode LC
	Insertion Loss (Single Fiber Max.)	0.35dB	0.30dB
	Insertion Loss (All Fibers Typ.)	0.10dB	0.10dB
	Return Loss (Min.)	>20dB	>20dB

Chassis Specifications:	
Weight	10.4 lbs.
Rack Mounting	Fits 19", 21" and 23" racks
Dimensions (H/W/D)	3.46" x 17.65" x 8.72" (8.79 cm x 44.83 cm x 22.15 cm)
Redundant AC Power	<25 Watts
Regulatory and Certifications	UL 62368-1 IEC 62368-1 CSA C22.2#62368-1 EN 55032 EN 55024 FCC 47 CFR Part 15 Subpart B ICES-003 GR-63 Humidity, Temperature, Vibration testing

Accessories

Fiber Mountain also supplies:

- Ultra high quality fiber optic cabling, available in single mode and multimode; plenum, riser, LSZH
- 21" and 23" rack-mounting ears for all L-Series panels (19" are standard and included)



About Fiber Mountain:

Glass Core represents a new way of thinking about data center infrastructure. With integrated software and hardware innovations, Glass Core infrastructure enables intelligent Layer 1 SDN switching with high-density optical connectivity for a software-controlled physical layer and efficient network organization and scalability.

Services: Fiber Mountain provides a variety of value added services from hands-on training, to 24x7 technical support. Contact Fiber Mountain for a schedule of available services.

Warranty: Return to factory hardware repair or replacement for one year.

Contact Fiber Mountain, Inc. to order: Email: Sales@FiberMountain.com - Phone: 1-800-480-9424

The Fiber Mountain logo, Fiber Mountain symbol, Fiber Mountain™, Glass Core™, Connectivity Virtualization®, PLP™, Intelligent Connection Identification™, Sensus™, OPX® and AllPath® are all trademarks of Fiber Mountain. Specifications subject to change without notice.

DS-00112.01.03